

About This Property

Sweeping meadow views greet you at the Town of Northborough's Green Street land. The Northborough Trails Committee has created trails that take you across the Green Street field, over Howard Brook, and onto the steep wooded hillside. Howard Brook—a tributary of the Assabet River—is a cold-water stream that supports native brook trout.

Features of Note

- The fields on the Green Street land and the privately owned Rawstron land are mowed regularly to maintain their open character and protect a type of wildlife habitat that is becoming less common in our region.
- Similarly, the private owners of the Rawstron Woods land actively manage the forest to maintain a quality habitat for birds and other animals, such as moose and bobcat. SVT holds conservation restrictions over all three properties.
- A sloped bridge crosses the stone wall and a stream along Green Street, allowing access from the northern tip of the property.
- A small man-made pond serves as a reminder of the land's agricultural past. Until recently, the pond served as a watering hole for the cows that grazed here.
- The forested portion of the land is dominated by mature eastern white pines, with occasional scattered oaks, beeches, and other hardwoods.

Learn more:

www.svtweb.org/GreenStreet

Trail Policies and Regulations

These policies apply to SVT properties on the map. Properties owned by other entities have their own posted policies.

The following are prohibited:

- Motorized vehicles
- Camping
- Bicycling
- Fires
- Disposing of trash or yard waste
- Cutting or removing plants



Dog walkers:

- Pick up and dispose of dog waste.
- Keep dogs on trails.
- Keep dogs out of ponds/streams/vernal pools.
- Put dogs on a leash when other hikers approach.

See our full dog-walking policy on the trail head kiosk.

Directions

With mapping software, search for this address:
200 Green Street Northborough, MA

From the center of Northborough, on Route 20, follow Church Street northwest 0.2 mile. Turn Right onto Howard Street and continue 0.9 mile. Bear left onto Green Street. After approximately 0.8 mile, the parking lot will be on your left.

Support SVT

SVT protects open spaces and natural areas in 36 communities around the Sudbury, Assabet, and Concord Rivers. We care for thousands of acres of land that provide habitat for native wildlife, and we maintain more than 60 miles of trails for public enjoyment.

SVT relies upon the support of our members to be successful.

Join Us! Help protect these lands forever.

www.svtweb.org

Green Street CR Trail Map



NORTHBOROUGH

This map includes trails that cross properties owned and maintained by the Town of Northborough.



18 Wolbach Road
Sudbury, MA 01776-2429
978-443-5588

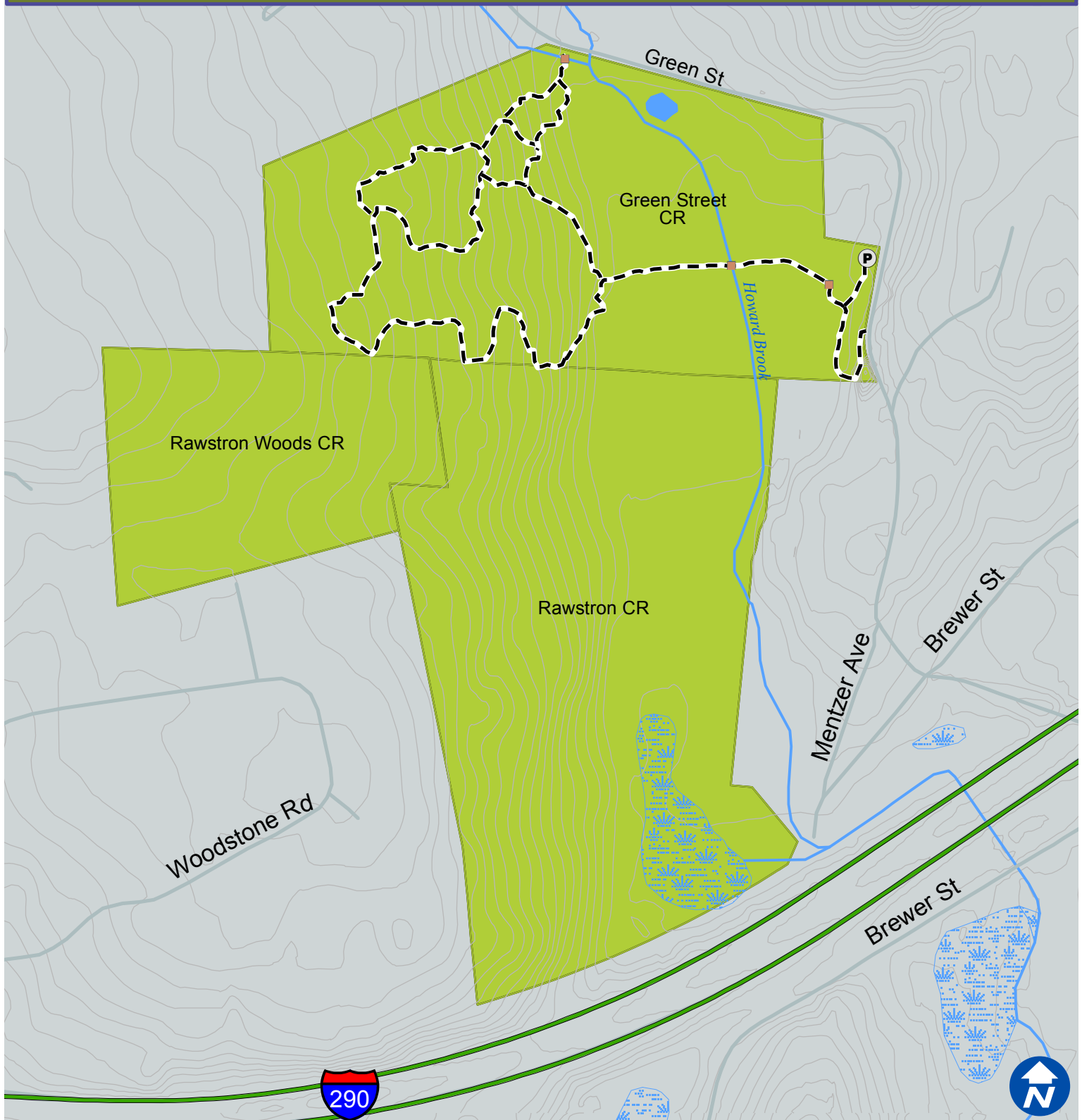
www.svtweb.org

Facebook: @SudburyValleyTrust

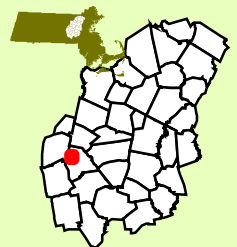
Twitter: @TweetSVT

Instagram: sudbury_valley_trustees

Green Street CR, Northborough



- P Parking - - Trail
- Water Body
- Road
- SVT CR
- Bridge
- Wetland
- SVT
- Other Owner



Love open spaces? Support SVT!

Sudbury Valley Trustees is a nonprofit conservation organization that protects land for the benefit of people and wildlife. Help us keep these trails open for all to enjoy. **Join or Donate today! www.svtweb.org**

How to Get Here