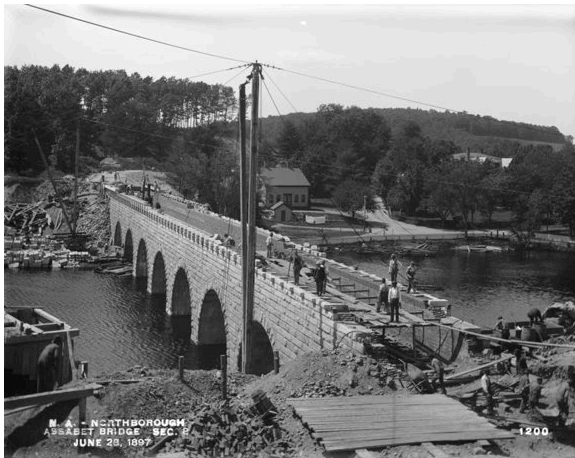


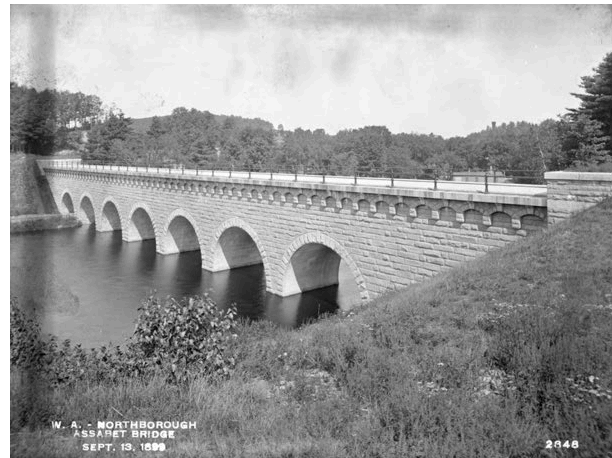
## STATION 1 Wachusett Aqueduct

The Wachusett Aqueduct was constructed during the late 1890's to transport water from Wachusett Reservoir in Clinton, Massachusetts, to the Boston metropolitan area. The masonry-lined aqueduct is currently inactive but will continue to serve as a backup for the nearby Cosgrove tunnel that was constructed in the 1960's.

### Wachusett Aqueduct, Assabet Bridge, Northborough, MA



Jun. 28, 1897



Sep. 13, 1899



Source: <https://www.digitalcommonwealth.org/search/commonwealth:br86b425x>