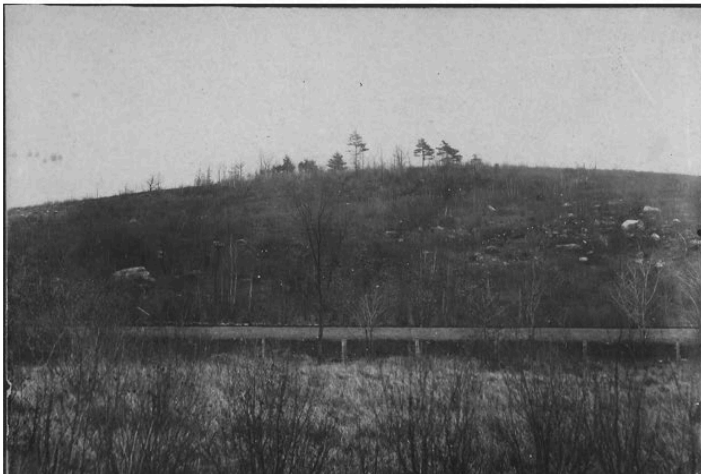


STATION 19 Agricultural Branch Railroad and Livestock Tunnel

A railroad from Northborough to Sterling, MA, was constructed in the 1860's to provide transportation of agricultural products to city markets. The original Agricultural Branch Railroad connected to Fitchburg and later became the Old Colony Line. Later still, it became part of the New Haven Railroad system. The railroad, now CSX, transports freight to Leominster frequently. This large culvert was probably constructed to allow passage of livestock to and from a nearby farm.



1902



2020

A view of Edmund Hill Woods from the same angle
(see boulder on left & RR tracks in center in both photos)