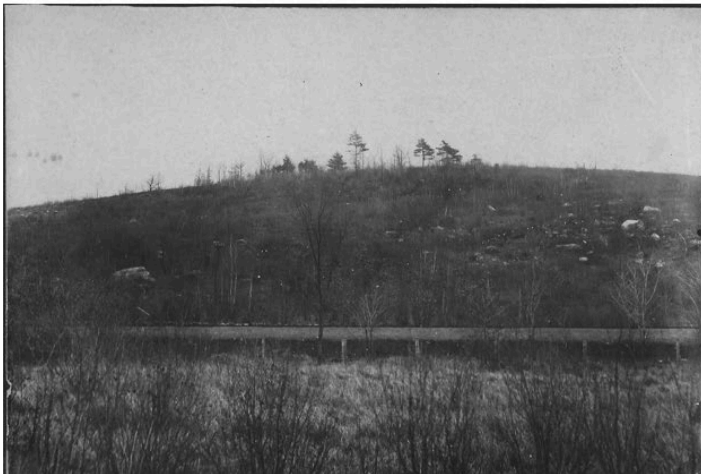


STATION 19 Agricultural Branch Railroad and Livestock Tunnel

A railroad from Northborough to Sterling, MA, was constructed in the 1860's to provide transportation of agricultural products to city markets. The original Agricultural Branch Railroad connected to Fitchburg and later became the Old Colony Line. Later still, it became part of the New Haven Railroad system. The railroad, now CSX, transports freight to Leominster frequently. This large culvert was probably constructed to allow passage of livestock to and from a nearby farm.



1902

A view of Edmund Hill Woods from the same angle
(see boulder on left & RR tracks in center in both photos)

2020

STATION 20 Spring-Fed Wetland

The wet area seen from this station receives water from many seeps and springs. Much of the precipitation that falls on the sandy soils east and west of the wetland recharges a groundwater reservoir that discharges to the area year-round, even during extended dry periods.